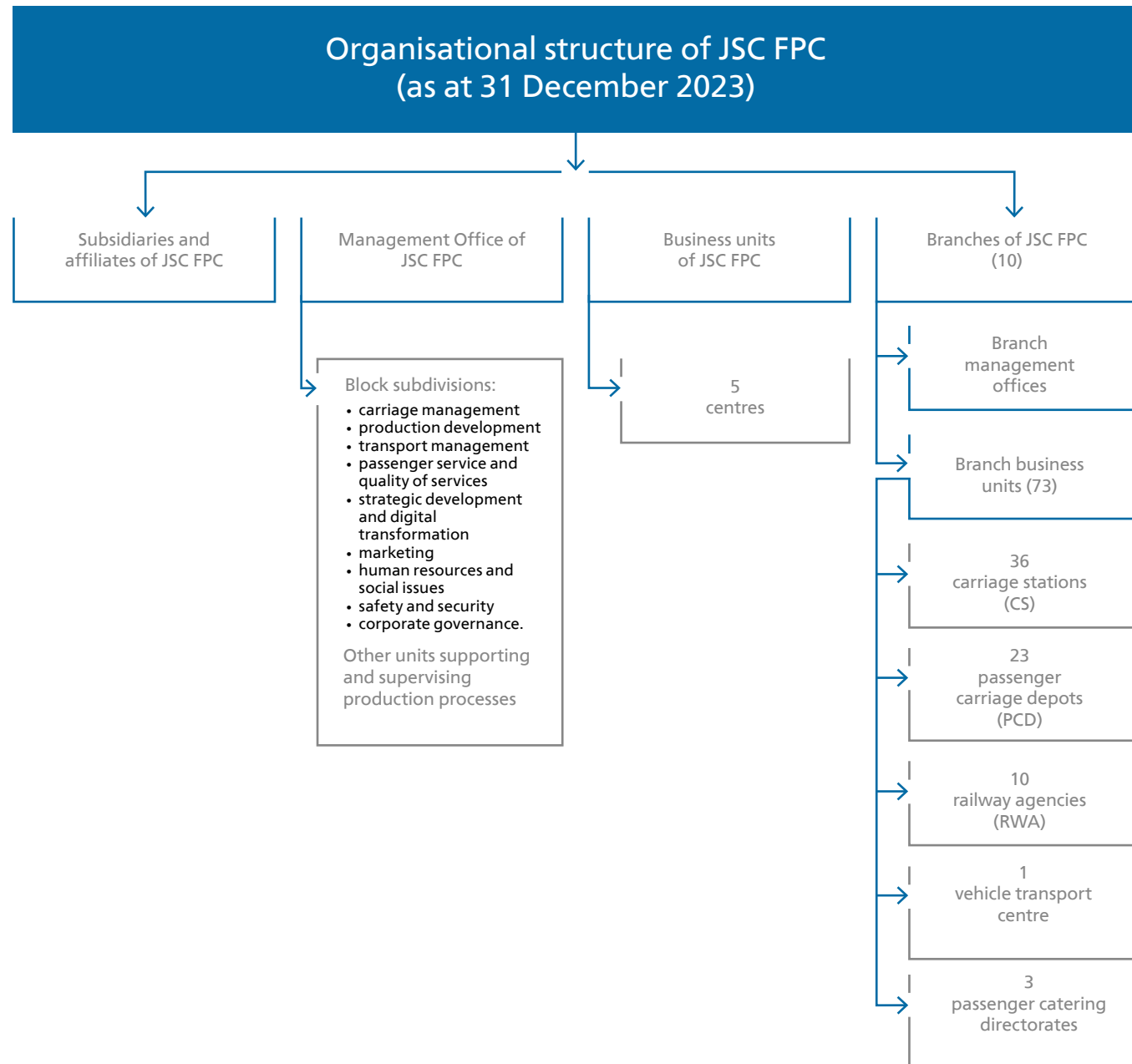


Organisational Structure

The organisational structure of JSC FPC comprises the management apparatus, five centres, ten regional branches, and six subsidiaries and other companies with JSC FPC's

participation. The branches comprise 23 passenger carriage depots, 36 carriage sites, 10 railway agencies, Vehicle Transport Centre, and three Passenger Catering Directorates.



Disposal of Non-Core Assets

Disposal of FPC's non-core assets (passenger carriages)

As at 1 January 2023, the Company had 93 passenger carriages recognised as non-core assets. Criteria of non-profile category: not used in the transportation process for more than 3 years and no prospects for use in the activities of FPC.

The general list included:

- 23 baggage carriages, after FPC terminated its baggage transportation activities

- 65 RIC carriages manufactured in 1980–1994 and intended for passenger transportation on international routes, which are not suitable for operation on domestic routes and not required on international routes due to lower demand and failing to meet modern requirements
- Five carriages of other types not required in transportation in view of design features

In 2023, 15 carriages were withdrawn, including 10 carriages written off; one carriage was sold; and four cars were repaired and used in transportation.